

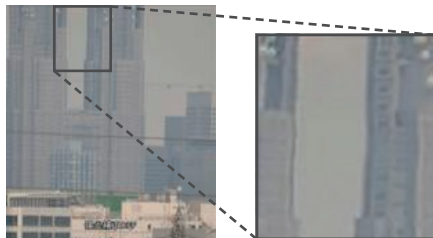
Heat Haze Mitigation Board for Long Distance Surveillance System VG-2000PCB

VG-2000PCB Heat Haze board can be easily integrated into Hitachi's camera interface system or can be configured as a stand alone board.

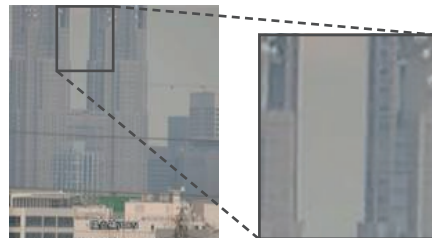


■ Features

Real time heat haze correction



Before improvement



After improvement

■ Specifications

item	Spec.	
External Interface	SDI In/Out	HD-SDI (SMPTE292M, 1920 x 1080/29.97p)
	Or CVBS In/Out	NTSC/PAL : VBS 1.0 Vp-p / 75Ω (future support)
	SIO	UART (3.3V LVCMOS)
	Power	DC5V Input
LED	LED 1-4	Operation status
Power	Input Voltage Range	DC5V (DC4.5 - 5.5V)
	Power Consumption	Less than 12.5W *
DipSwitch	DSW 1-4	ALL 'OFF' is default setting. Please don't change Dip switch settings.
Heathaze Mitigation	Correction Strength	Strong/Weak
	Latency	Low : less than 1 frame duration Normal : Less than 3 frame duration
	Edge Enhancer	ON/OFF
	Through Mode	ON/OFF
	Center Marker	ON/OFF
Control	Parametera/Status Mngmt.	Protocol : KPD Protocol Baudrate : 115,200bps
	Remote firmware update	Protocol : XMODEM 1K Baudrate : 115,200bps Update duration : about 15minutes Error Recovery
Temperature		Operating Temperature : -10°C - 60°C (Requires appropriate heat dissipation. There is no guarantees of heat radiation performance.) Storage Temperature : -20°C - 70°C
Humidity		Less than 90% RH (Non-condensing)
Assuming Installation Environment		Inside of outdoor camera housing case. Uptime is 24 hours/day
Dimension		60mm(W) × 17.5mm(H) × 105mm(D) (include protruding parts)
Weight		less than 70g

* When using a power supply unit whose power capacity is less than 60 W, select the power supply unit with overcurrent protection function.

⚠ CAUTION : To ensure safe operation, please read the instruction manual before using this product.

Hitachi Kokusai Electric Inc.

These Specifications are subject to change without notice.

Hitachi Kokusai Electric America, Ltd. URL: <http://www.hitachikokusai.us>

Headquarters: 150 Crossways Park Drive, Woodbury, NY 11797, U.S.A.

Hitachi Kokusai Electric Europe GmbH URL: <http://www.hitachi-keu.com>

Headquarters: Siemensstrasse 9, D-63263 Neu-Isenburg, Germany

Phone: +49-6102-8332-00, Fax: +49-6102-202616